



**The MOUNTAIN  
HERITAGE**  
HOTEL & SPA RETREAT  
BLUE MOUNTAINS NSW

*Views Above the Rest*  
Meetings, conferences & events



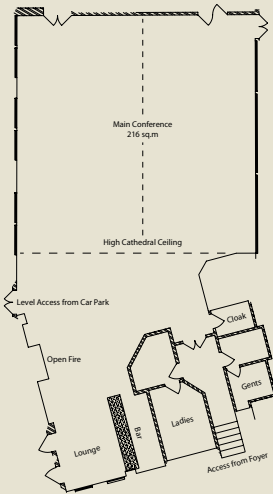
**The Mountain Heritage Hotel & Spa Retreat**, located in Katoomba in the Blue Mountains, is within 2 hours drive of the Sydney CBD. This accessibility to both Sydney and the Blue Mountains National Parks make it an ideal location for a conference involving both indoor and outdoor activities.

The Mountain Heritage is renowned for its professionalism, flexibility and discretion. We are experts at focusing on the finer details that make all the difference to the success of your conference. It is this reputation that has inspired a wide range

of organisations including government authorities, multinational corporations and small businesses to return again and again.

With a choice of conference rooms, each with their own character, simply choose the seating arrangement to suit your meeting size. Our largest facility can hold up to 180 delegates. All conference rooms are fully equipped with screens, white boards, flip charts, pens and paper as well as tea and coffee facilities. Additional equipment is available on request.

*All of our conferencing rooms have natural lighting, windows that open for fresh air and are void of any obstructions or columns.*



## Main Room

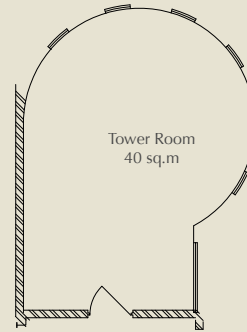
This large room is fully self contained with ladies and gents toilets, bar, cloak room, open fire, kitchen facilities, heating & cooling and windows that open for fresh mountain air and natural light. Located on the western end of the building with direct access from the car park and Tower Room, the Main Conference Room features high cathedral style ceilings, no obstructing columns and spot and mood lighting.

Dimensions (Lx W)	Height	U-shape	Theatre Seating	Banquet Seating	Board Room	Class Room
18m x 12m	7m	70	210	150	60	150

## Tower Room

This delightful room epitomizes old - world charm with its leadlight operable windows and high ornate ceiling. The unusual shape of the room allows considerable flexibility for placement of conference equipment as there are no obstructing columns. Located on the western side of the building the Tower Room has natural lighting and provides direct access to the gardens.

Dimensions (Lx W)	Height	U-shape	Theatre Seating	Board Room	Class Room
8 x6	4m	18	20	20	12



## Glenview Room

The Glenview Room has views to the south over the Jamison Valley and beyond. Private and discreet it is ideal for small meetings or as a breakout room with natural lighting, operable windows for fresh air and is void of columns.

Dimensions (Lx W)	Height	U-shape	Theatre Seating	Board Room	Class Room
6x6m	3m	18	25	24	20



## The Coachhouse

The Coachhouse is a unique, stand-alone facility located adjacent to The Mountain Heritage. The Coachhouse has a raked timber ceiling with historic timber trusses. Natural light and a north facing wall of glass, French doors which open out onto its own balcony with direct access to the gardens and recreational facilities. Windows can open and the room is void of columns.

Dimensions (Lx W)	Height	U-shape	Theatre Seating	Board Room	Class Room
14m x 5.5m	3m	20	40	24	34



# Catering and Accommodation

With 41 accommodation rooms, a restaurant catering for up to 120 diners, the choice of four magnificent meeting rooms and a location and atmosphere which will both stimulate and relax your attendees. The Mountain Heritage is the perfect location for your next conference. We are able to take care of all your catering needs, from morning teas through to grand finale themed dinners. The entire Mountain Heritage Hotel is also available to be booked for your exclusive use.

For more information, a conference proposal pack, or to book an inspection, please contact us on the details below.



P: (02) 4782 2155 | F: (02) 4782 5323

events@mountainheritage.com.au

[www.mountainheritage.com.au](http://www.mountainheritage.com.au)

Cnr Apex & Lovel Street  
Katoomba NSW 2780

